



Australia

**Ravenswood  
Gold Mine**

# Ravenswood Gold Mine

Ravenswood is transitioning from underground production at Mt Wright to a large scale, low cost open pit mining operation.

Ravenswood is located approximately 95km south-west of Townsville and 65km east of Charters Towers in northeast Queensland, Australia. Ore is currently sourced from the Mt Wright underground mine and as part of the Ravenswood Expansion Project (REP) stockpiles. The Mt Wright underground mine uses the sub-level shrinkage with continuous fill (SLS) mining method which has been successfully pioneered by the Resolute team. In 2016, the Nolans processing plant was re-configured to increase throughput capacity from 1.5Mtpa to 2.8Mtpa in association with the re-commencement of open pit mining and now consists of triple stage crushing, SAC and ball mill grinding, and CIP processing with a gravity circuit for recovery of free gold.

**Mine Life**  
**+10**  
years

**Resources**  
**4.8** Moz

**Reserves**  
**1.7** Moz

**Life of Mine  
Average  
Production**  
**115** kozpa

**LOM AISC**  
US\$  
**823**  
/oz

**5** Mtpa  
Nameplate  
Capacity



**Resolute**

ASX:RSG | [www.rml.com.au](http://www.rml.com.au)

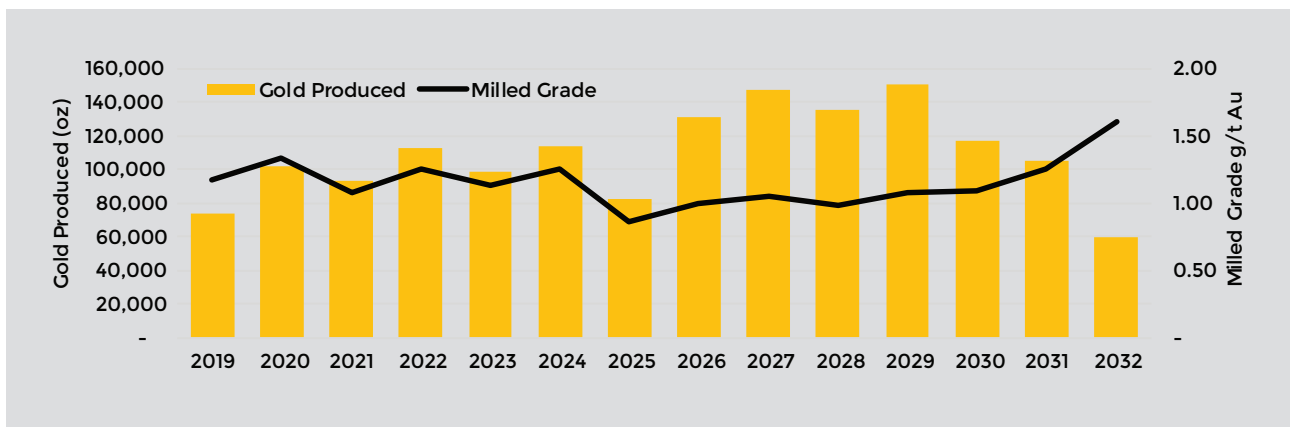


## Operating Performance

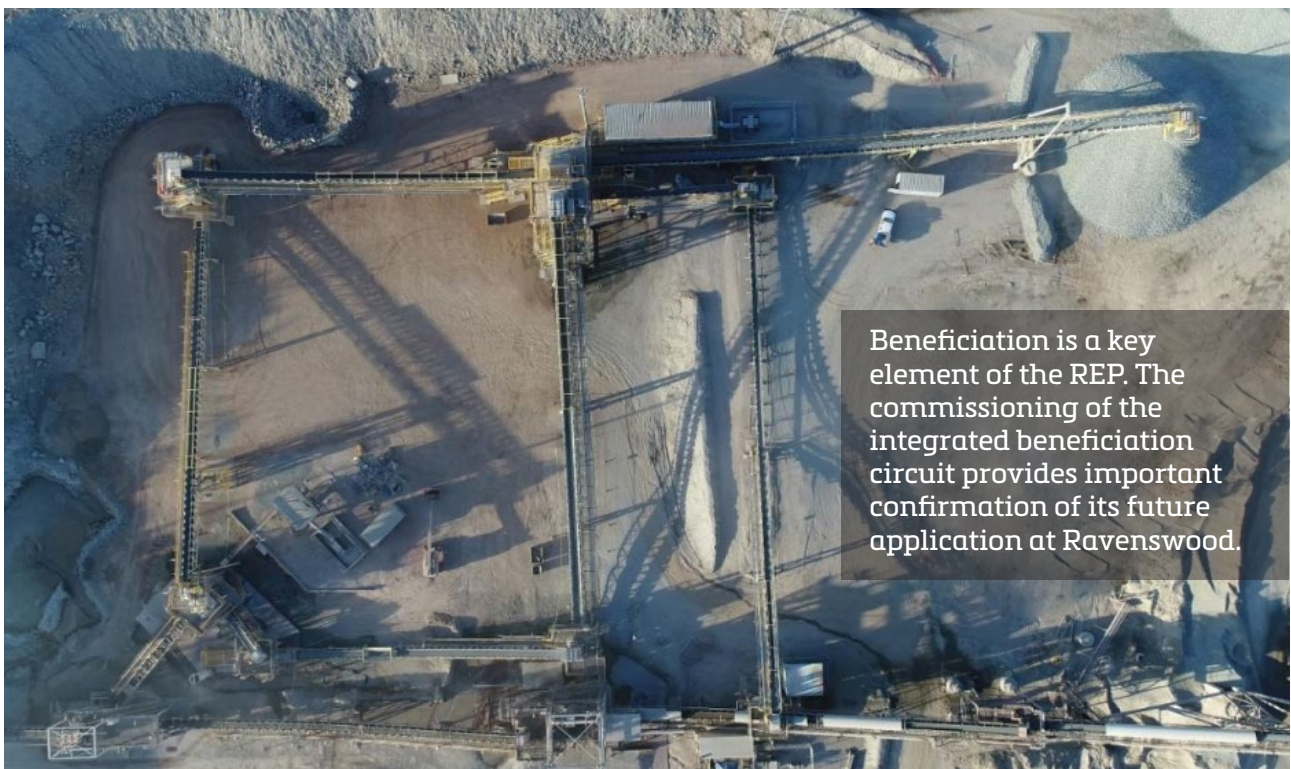
		FY18	FY17
Ore Mined	Mt	2.46	2.37
Ore Milled	Mt	2.45	2.00
Head Grade	g/t	1.19	1.54
Recovery Rate	%	94.4	93.1
Gold Produced (poured)	oz	89,975	92,004
Cash Cost	US\$/oz	1,019	943
	A\$/oz	1,330	1,252
AISC	US\$/oz	1,071	1,059
	A\$/oz	1,394	1,406

## Ore Reserves as at 30 June 2018

Category	Tonnes	Grade	Ounces
Proved	43,280,794	0.8	1,182,439
Probable	23,318,657	0.7	547,635
<b>Total</b>	<b>66,599,450</b>	<b>0.8</b>	<b>1,730,075</b>



REP Gold Production



Beneficiation is a key element of the REP. The commissioning of the integrated beneficiation circuit provides important confirmation of its future application at Ravenswood.

Ravenswood Beneficiation Plant